

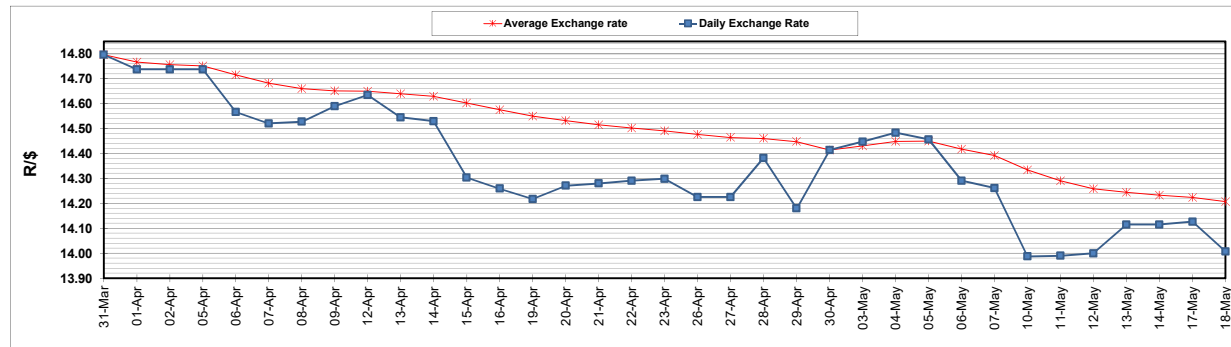
	PETROL 95 ULP	PETROL 93 ULP & LRP	DIESEL 0.05%	DIESEL 0.005%	ILL. PAR.
GAUTENG PUMP PRICE (SA c/l) AS FROM 05/05/2021	1,723.000	1,701.000	-	-	-
WHOLESALE PRICE (SA c/l) AS FROM 05/05/2021	-	-	1,446.620	1,450.020	857.488
SINGLE NATIONAL MAXIMUM RETAIL PRICE	-	-	-	-	1,076.000
BASIC FUEL PRICE - 18/05/2021 (SA c/l)	719.376	708.419	695.110	699.685	677.721
PRESS RELEASE CONTRIBUTION TO BFP 05/05/2021 - 18/05/2021 (SA c/l)	727.170	715.170	659.630	663.030	644.128
UNIT OVER/(UNDER) RECOVERY - 18/05/2021 (SA c/l)	7.794	6.751	(35.480)	(36.655)	(33.593)
AVERAGE BASIC FUEL PRICE 30/04/2021 - 18/05/2021	726.655	715.801	688.146	692.148	675.544
AVERAGE UNIT OVER/(UNDER) RECOVERY 30/04/2021 - 18/05/2021	2.592	1.446	(21.362)	(22.195)	(26.108)

ANALYSIS MOVEMENT OF AVERAGE OVER/(UNDER) RECOVERY

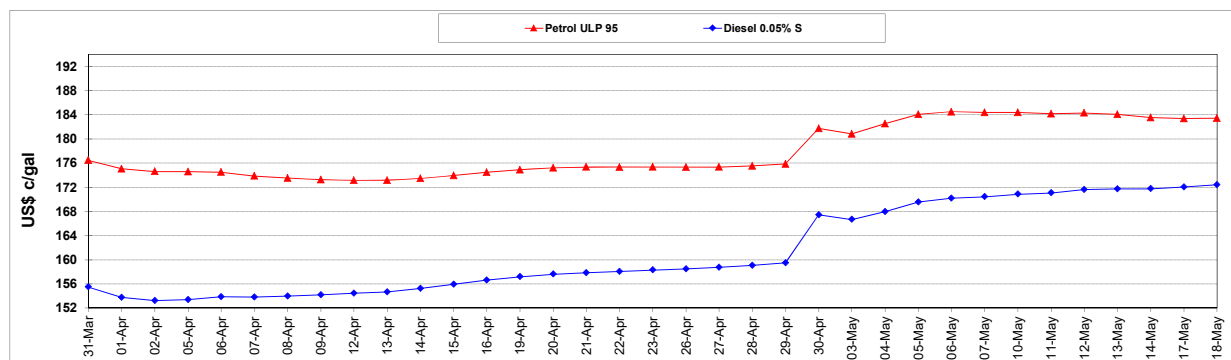
	PETROL 95	PETROL 93	DIESEL 0.05%	DIESEL 0.005%	ILL. PAR.
- MOVEMENT IN INTERNATIONAL PRODUCT PRICES	(9.719)	(10.681)	(33.021)	(33.921)	(37.553)
- MOVEMENT IN EXCHANGE RATE	12.311	12.127	11.659	11.726	11.445
AVERAGE UNIT OVER/(UNDER) RECOVERY 30/04/2021 - 18/05/2021	2.592	1.446	(21.362)	(22.195)	(26.108)

R/\$ EXCHANGE RATE - (R/\$14.0073- 18/05/2021)

EXCHANGE RATE USED IN BASIC FUEL PRICE



INTERNATIONAL PRODUCT PRICES OF BASKET USED IN BASIC FUEL PRICE



BASIC FUEL PRICE IN SA CENTS PER LITRE

